

Test Report

Report No. ECL03I004535002

Page 1 of 7

Applicant ZHEJIANG BRIDGOLD COPPER SCIENCE AND TECHNOLOGY CO.,LTD

Address NO.11, ZHENXING ROAD, XINGUANG INDUSTRIAL ZONE, LIUSHI TOWN,
YUEQING CITY, ZHEJIANG PROVINCE, CHINA

The following sample(s) and sample information was/were submitted and identified by/on the behalf of the client

Sample Name Flexible Copper Foil Connector with PVC Dip Coating
Material PVC
Sample Received Date Sep. 1, 2016
Testing Period Sep. 1, 2016 to Sep. 5, 2016

Test Requested As specified by client, to test Lead (Pb), Cadmium (Cd), Mercury (Hg), Hexavalent Chromium(Cr(VI)), Polybrominated Biphenyls(PBBs) , Polybrominated Diphenyl Ethers(PBDEs), Phthalates(DBP, BBP, DEHP, DIBP) in the submitted sample(s).

Test Method Please refer to the following page(s).

Test Result(s) Please refer to the following page(s).

Conclusion

Tested Sample	According to directive	Result
Submitted Sample	RoHS Directive 2011/65/EU with amendment (EU) 2015/863	Pass

Pass means that the results shown on the report comply with the limits set by RoHS Directive 2011/65/EU with amendment (EU) 2015/863.



Tested by Xiangping Jiang

Approved by Lin Zhang

Lin Zhang
Approved Signatory

Reviewed by Sha Chen

Date Sep. 5, 2016

No. R219921490

Test Report

Report No. ECL03I004535002

Page 2 of 7

Test Method

Test Item(s)	Test Method	Measured Equipment(s)
Lead (Pb)	IEC 62321-5:2013 Ed.1.0	ICP-OES
Cadmium (Cd)	IEC 62321-5:2013 Ed.1.0	ICP-OES
Mercury (Hg)	IEC 62321-4:2013 Ed.1.0	ICP-OES
Hexavalent Chromium(Cr(VI))	IEC 62321:2008 Ed.1 Annex C	UV-Vis
Polybrominated Biphenyls(PBBs)	IEC 62321-6:2015	GC-MS
Polybrominated Diphenyl Ethers(PBDEs)	IEC 62321-6:2015	GC-MS
Phthalates(DBP, BBP, DEHP, DIBP)	Refer to IEC 62321-8 CDV	GC-MS

Test Report

Report No. ECL03I004535002

Page 3 of 7

Test Result(s)

Tested Item(s)	Result	MDL	Limit
Lead (Pb)	N.D.	2 mg/kg	1000 mg/kg
Cadmium (Cd)	N.D.	2 mg/kg	100 mg/kg
Mercury (Hg)	N.D.	2 mg/kg	1000 mg/kg
Hexavalent Chromium (Cr(VI))	N.D.	2 mg/kg	1000 mg/kg

Tested Item(s)	Result	MDL	Limit
Polybrominated Biphenyls(PBBs)			
Monobromobiphenyl	N.D.	5 mg/kg	1000 mg/kg
Dibromobiphenyl	N.D.	5 mg/kg	
Tribromobiphenyl	N.D.	5 mg/kg	
Tetrabromobiphenyl	N.D.	5 mg/kg	
Pentabromobiphenyl	N.D.	5 mg/kg	
Hexabromobiphenyl	N.D.	5 mg/kg	
Heptabromobiphenyl	N.D.	5 mg/kg	
Octabromobiphenyl	N.D.	5 mg/kg	
Nonabromobiphenyl	N.D.	5 mg/kg	
Decabromobiphenyl	N.D.	5 mg/kg	

Tested Item(s)	Result	MDL	Limit
Polybrominated Diphenyl Ethers(PBDEs)			
Monobromodiphenyl ether	N.D.	5 mg/kg	1000 mg/kg
Dibromodiphenyl ether	N.D.	5 mg/kg	
Tribromodiphenyl ether	N.D.	5 mg/kg	
Tetrabromodiphenyl ether	N.D.	5 mg/kg	
Pentabromodiphenyl ether	N.D.	5 mg/kg	
Hexabromodiphenyl ether	N.D.	5 mg/kg	
Heptabromodiphenyl ether	N.D.	5 mg/kg	
Octabromodiphenyl ether	N.D.	5 mg/kg	
Nonabromodiphenyl ether	N.D.	5 mg/kg	
Decabromodiphenyl ether	N.D.	5 mg/kg	

Test Report

Report No. ECL03I004535002

Page 4 of 7

Tested Item(s)	Result	MDL	Limit
Phthalates			
Dibutyl phthalate(DBP) CAS#:84-74-2	N.D.	50 mg/kg	1000 mg/kg
Butylbenzyl phthalate(BBP) CAS#:85-68-7	N.D.	50 mg/kg	1000 mg/kg
Di-2-ethylhexyl phthalate(DEHP) CAS#:117-81-7	663 mg/kg	50 mg/kg	1000 mg/kg
Diisobutyl phthalate(DIBP) CAS#:84-69-5	N.D.	50 mg/kg	1000 mg/kg

Tested Sample/Part Description Orange plastic

Remark: The sample(s) had been dissolved totally tested for Lead, Cadmium, Mercury.

-MDL = Method Detection Limit

-N.D. = Not Detected (<MDL)

-mg/kg = ppm = parts per million

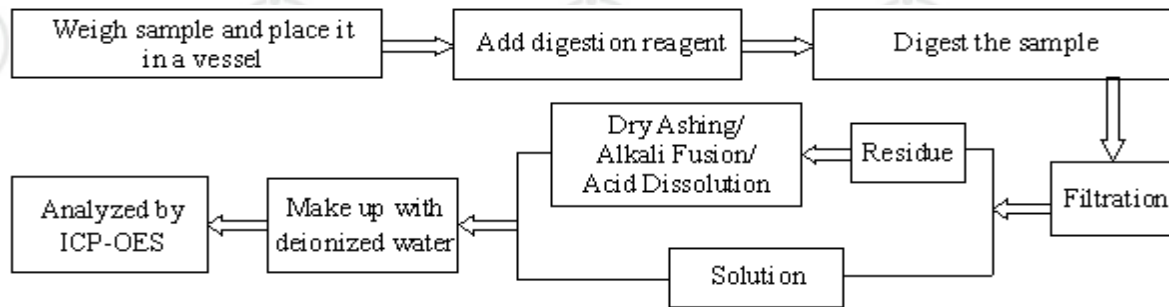
Test Report

Report No. ECL03I004535002

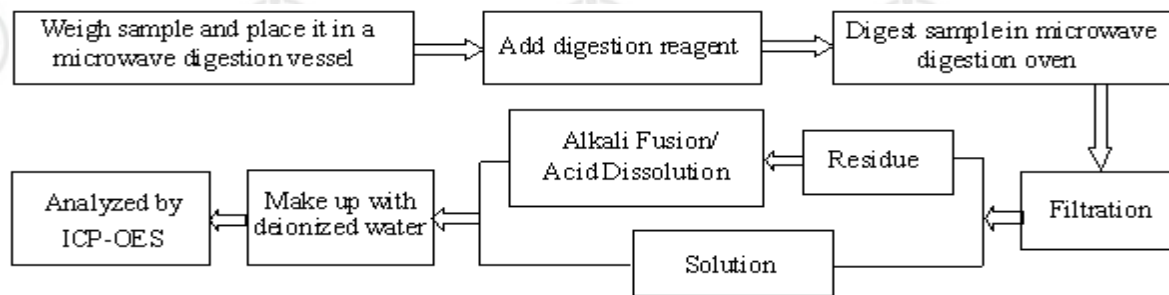
Page 5 of 7

Test Process

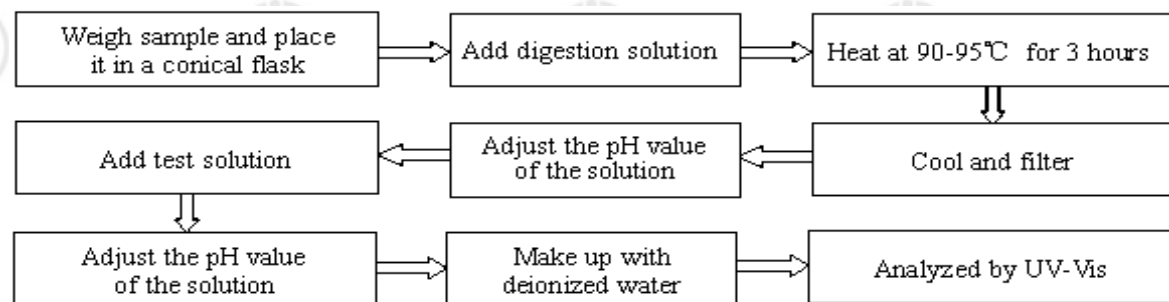
1. Lead (Pb), Cadmium (Cd)



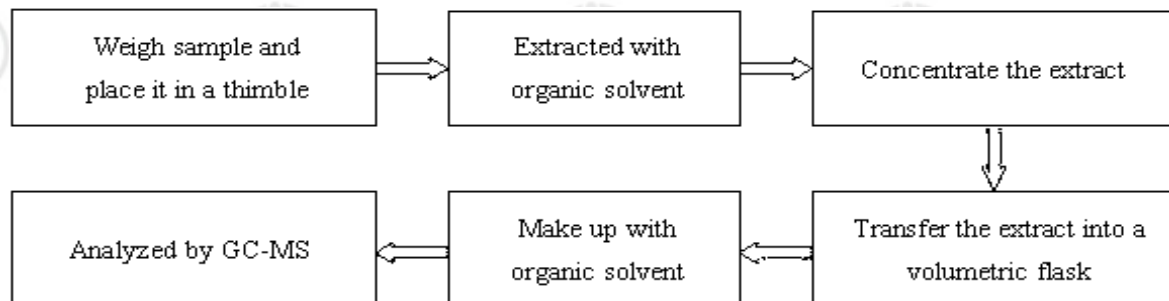
2. Mercury (Hg)



3. Hexavalent Chromium(Cr(VI))



4. Polybrominated Biphenyls(PBBs) , Polybrominated Diphenyl Ethers(PBDEs)

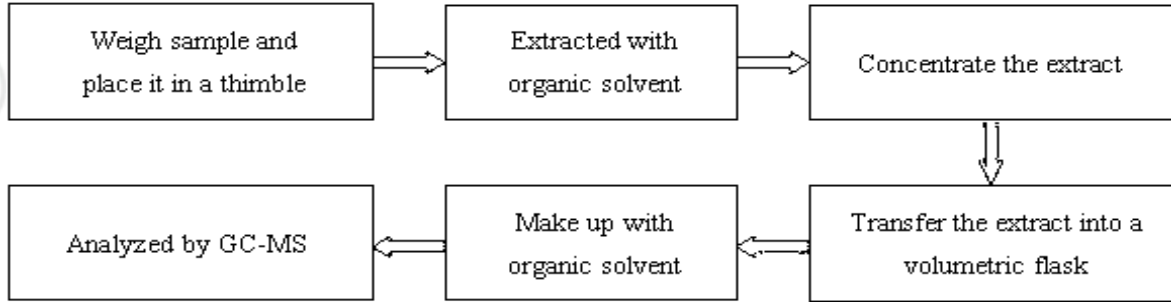


Test Report

Report No. ECL03I004535002

Page 6 of 7

5. Phthalates(DBP, BBP, DEHP, DIBP)

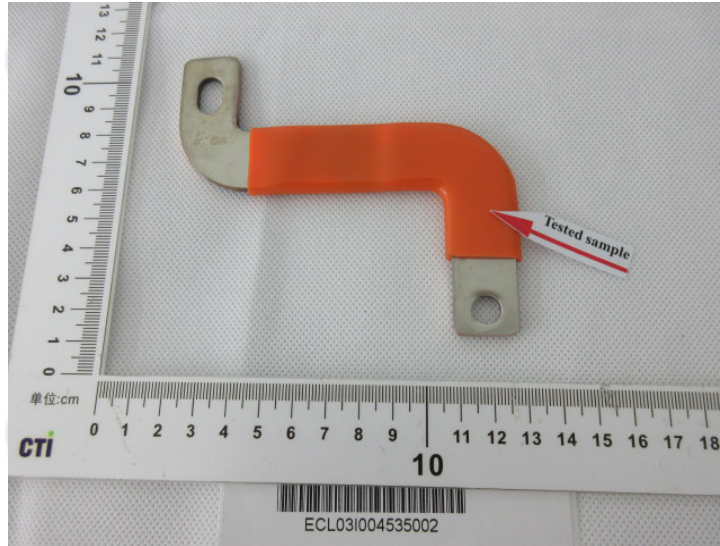


Test Report

Report No. ECL03I004535002

Page 7 of 7

Photo(s) of the sample(s)



*** End of report ***

The test report is effective only with both signature and specialized stamp. The result(s) shown in this report refer only to the sample(s) tested. Without written approval of CTI, this report can't be reproduced except in full.